

Madison, Wisconsin

# CITY OF MADISON

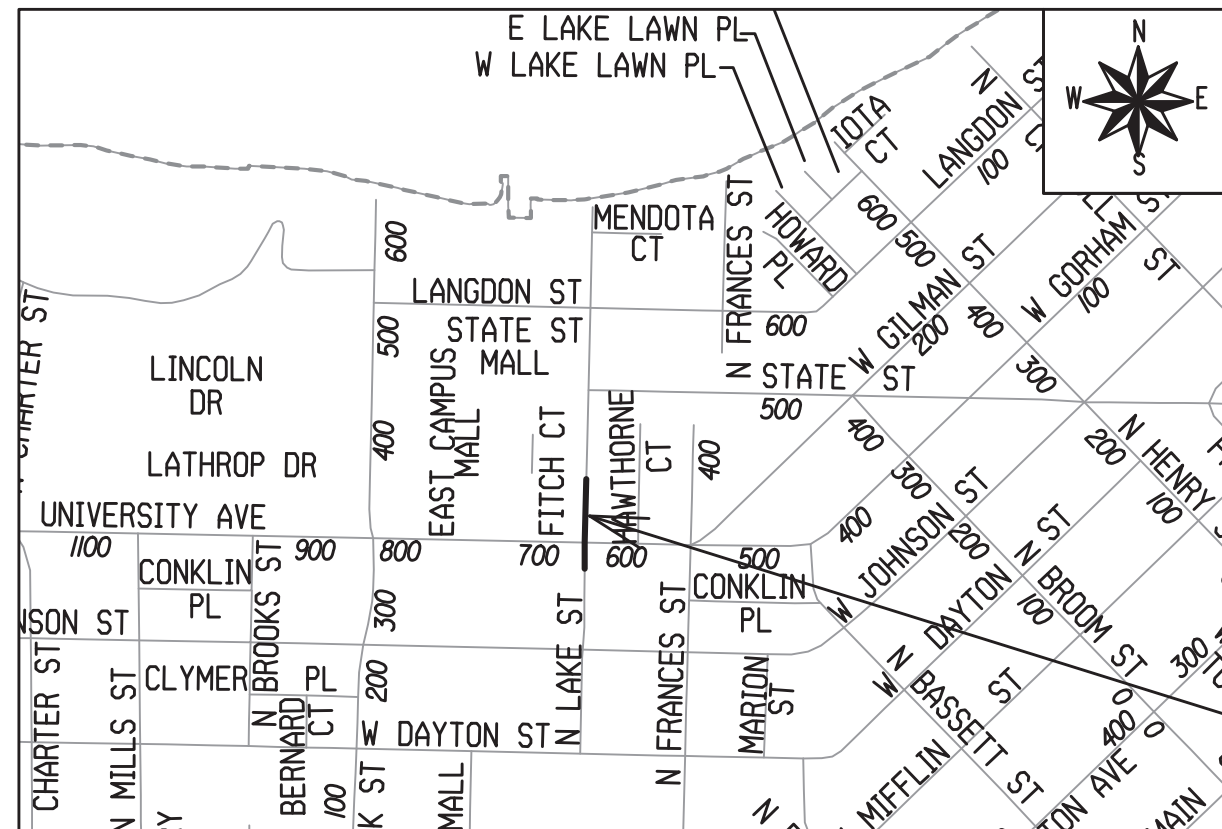
## CITY ENGINEERING DIVISION

### DEPARTMENT OF PUBLIC WORKS

# PLAN OF PROPOSED IMPROVEMENT

## LAKE STREET SANITARY SEWER REPLACEMENT

CITY PROJECT NO. 15045  
CONTRACT NO. 9501



PROJECT  
LOCATION

### INDEX OF SHEETS

SHEET NO.	TITLE
1	
U1	SEWER PLAN & PROFILE
U2	SEWER SCHEDULE
PM1	PAVEMENT MARKING PLAN
TC1-TC6	TRAFFIC CONTROL PLAN

REVISION #1 8/1/2024  
REVISED SHEETS: TITLE  
ADDED SHEETS: R1, P1, G1, & L1

CONVENTIONAL SIGNS	
FIELD VERIFY ALL UTILITY LOCATIONS	
GAS	G
STORM SEWER	ST
SANITARY SEWER	SAN
WATER	W
BURIED ELECTRIC	E
OVERHEAD ELECTRIC	OH
POWER POLE	[Symbol]
ADA COMPLIANT RAMP W/ DETECTABLE WARNING FIELD	[Symbol]
COMBUSTIBLE FLUIDS	[Symbol]

### NOTES:

ALL GUTTERS SHALL DRAIN WITH A MINIMUM GRADE OF 0.50% TOWARD STORM SEWER INLETS. SIDEWALK RAMPS AND CURB THRU SIDEWALK RAMPS SHALL HAVE A MAXIMUM SLOPE OF 1" PER 12", SIDEWALK AND CURB RAMPS SHALL BE CONSTRUCTED WITH A SIDE SLOPE OF 1.50%. SIDEWALK SHALL HAVE A MINIMUM LONGITUDINAL SLOPE OF 0.50% AND A MAXIMUM LONGITUDINAL SLOPE OF 5.00% EXCEPT WHERE STREET GRADES EXCEED 5.00%.

PUBLIC IMPROVEMENT PROJECT APPROVED

APPROVED DATE: FEBRUARY 13, 2024

BY THE COMMON COUNCIL OF MADISON, WISCONSIN

PUBLIC IMPROVEMENT DESIGN APPROVED BY:

*[Signature]* Mar 22, 2024

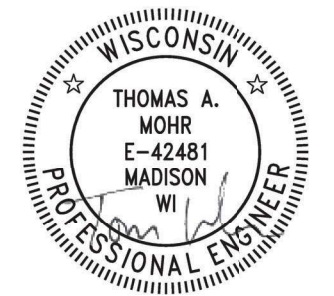
City Engineer Date

SANITARY SEWER DESIGNED BY:



Mar 22, 2024

PAVEMENT MARKING & TRAFFIC CONTROL DESIGNED BY:



Mar 22, 2024

PLOT SCALE: 1" = 1'

PLOT NAME: ----

REV. DATE: 3/18/2024 6:08 PM

ORIGINATOR: CITY\_OF\_MADISON



# SANITARY SEWER SCHEDULE

## PROPOSED SANITARY STRUCTURES

SAS NO.	STATION	LOCATION (OFFSET)	TOP OF CASTING	E.I.	DEPTH	NOTES
<b>N. LAKE STREET</b>						
SAS #1	2+25.61	CL	864.57	847.70	16.87	[1], 5-FT DIA
SAS #2	5+12.78	CL	861.09	847.92	13.17	[1], 5-FT DIA
SAS #3	5+42.60	CL	860.96	847.96	13.00	[1], 5-FT DIA

## PROPOSED SANITARY PIPES

FROM (DNSTM)	TO (UPSTM)	DWNSTRM E.I.	UPSTRM E.I.	PLAN (PAY) LGTH (FT)	SLOPE (%)	PIPE SIZE	PVC TYPE	NOTES
<b>E. WILSON STREET</b>								
SAS #4850-076	SAS #4850-013	847.55	847.61	92	0.07%	24"	SDR-26	-
SAS #4850-013	SAS #1	847.63	847.70	105	0.07%	24"	C900	-
SAS #1	SAS #2	847.72	847.92	287	0.07%	24"	SDR-26	-
SAS #2	SAS #3	847.94	847.96	30	0.07%	24"	SDR-26	-

## SANITARY STRUCTURE REMOVALS

STRUCTURE ID NO.	STATION	LOCATION (OFFSET)	TOP OF CASTING	E.I.	DEPTH	NOTES
<b>N. LAKE STREET</b>						
SAS #4850-012	2+01.90	RT-0.36	865.12	847.96	17.16	-
SAS #4850-011	4+54.46	RT-4.08	861.23	848.13	13.10	-
SAS #4850-009	5+12.96	CL	861.10	848.17	12.93	-

## SANITARY PIPES REMOVALS & ABANDONMENTS

REMOVE FROM	REMOVE TO	LGTH (FT)	PAY LGTH (FT)	PIPE SIZE	PIPE TYPE	NOTES
<b>N. LAKE STREET</b>						
SAS #4850-076	SAS #4850-013	92	0	15"	CI	-
SAS #4850-013	SAS #4850-012	81	0	15"	CI	-
SAS #4850-012	SAS #4850-011	252	0	15"	CI	-
SAS #4850-011	SAS #4850-009	59	0	15"	CI	-
SAS #4850-009	SAS #3	25	0	15"	CI	-

## ULO

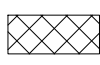
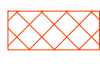

ULO NO.	STATION	LOCATION (OFFSET)	TYPE	TOP ELEV.	NOTES
<b>N. LAKE STREET</b>					
ULO1	1+96.42	CL	FIBER OPTIC	-	-

## SPECIFIC NOTES

[1] INSTALL EXTERNAL SEWER ACCESS STRUCTURE JOINT SEAL PER S.D.D. 5.7.2



**LEGEND:**

-  SANITARY SEWER REPLACEMENT TRAFFIC CONTROL/WORK ZONE
-  LAKE ST RAMP TRAFFIC CONTROL
-  SANITARY SEWER TO BE REPLACED

ACCESS TO UNIVERSITY SQUARE PARKING GARAGE TO REMAIN OPEN AT ALL TIMES.

**NB N LAKE ST (JOHNSON TO UNIVERSITY)**

INSTALL TYPE III BARRICADES WITH "ROAD CLOSED LOCAL TRAFFIC ONLY" AND "PARKING GARAGES OPEN FROM LAKE ST" AT JOHNSON AND LAKE. STAGGER SO VEHICLES CAN STILL ACCESS PARKING GARAGES.

**NB N LAKE ST (JOHNSON TO UNIVERSITY)**

PLACE ADVANCED WARNING SIGN 7 DAYS PRIOR TO START DATE IN NB RIGHT TRAVEL LANE. MESSAGE TO READ:

NB LAKE ST TO CLOSE

(START DATE) TO (END DATE)

ACCESS TO LAKE & JOHNSON PARKING GARAGE TO REMAIN OPEN AT ALL TIMES.

PARKING GARAGES OPEN FROM LAKE ST

ROAD CLOSED LOCAL TRAFFIC ONLY

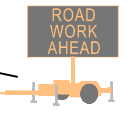
JOHNSON ST

FRANCES ST

DAYTON ST



INSTALL ROAD CLOSED AHEAD SIGN.



ROAD WORK AHEAD

MATCHLINE - TC 2

MATCHLINE - TC 1

MARK	REVISION	DATE	BY

DESIGNED BY: \_\_\_\_\_

DATE: 3/6/2024 10:25 AM

SCALE: \_\_\_\_\_

MADISON, WI

CONTRACT NO: \_\_\_\_\_

TRAFFIC CONTROL PLAN - PHASE 1

LAKE ST & UNIVERSITY AVE - SANITARY SEWER REPLACEMENT

M:\DESIGN\Projects\15045\CAD\Traffic\15045TE-TrafficControl.dwg

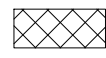


15045

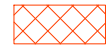
TC - 1



**LEGEND:**



SANITARY SEWER REPLACEMENT  
TRAFFIC CONTROL/WORK ZONE



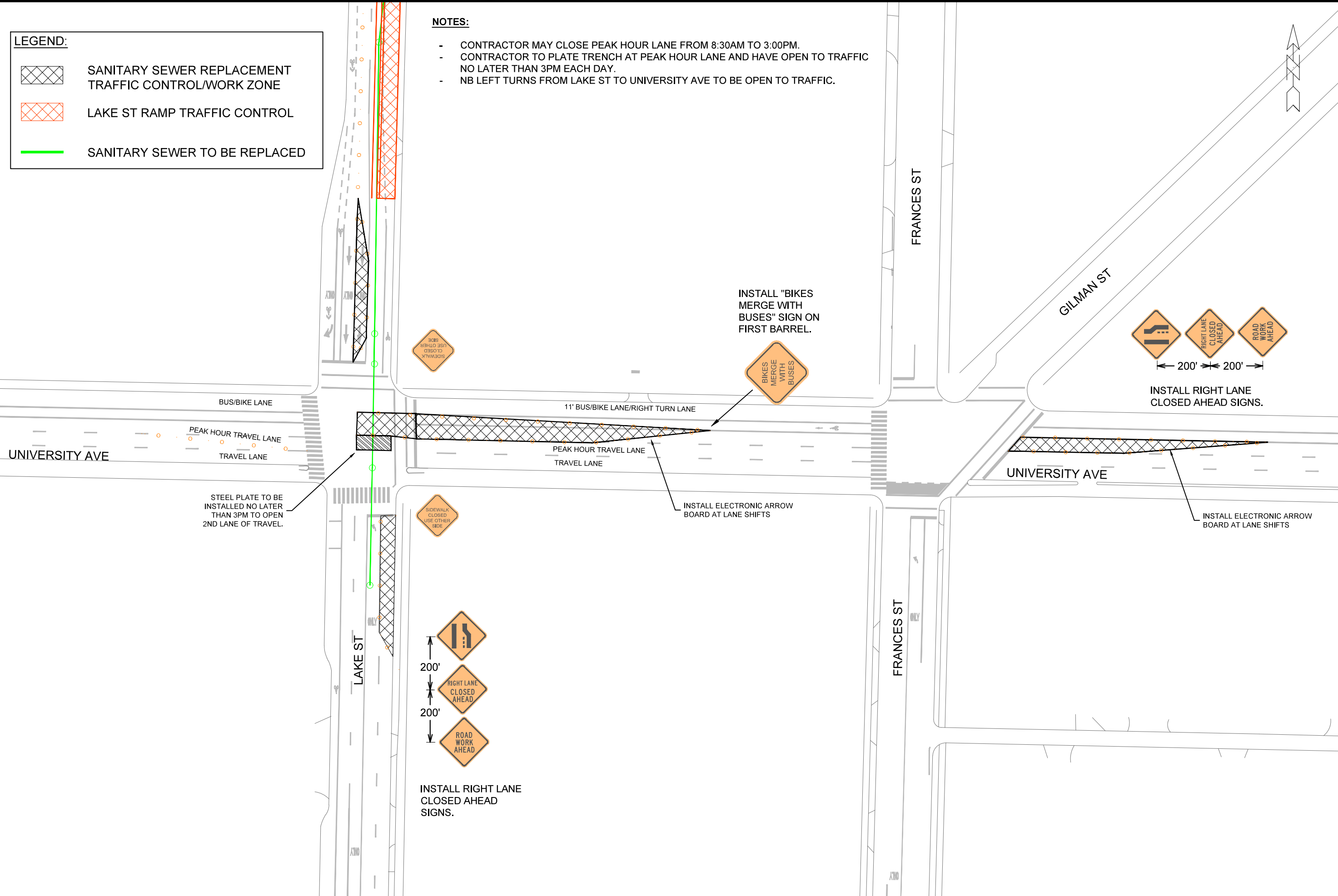
LAKE ST RAMP TRAFFIC CONTROL



SANITARY SEWER TO BE REPLACED

**NOTES:**

- CONTRACTOR MAY CLOSE PEAK HOUR LANE FROM 8:30AM TO 3:00PM.
- CONTRACTOR TO PLATE TRENCH AT PEAK HOUR LANE AND HAVE OPEN TO TRAFFIC NO LATER THAN 3PM EACH DAY.
- NB LEFT TURNS FROM LAKE ST TO UNIVERSITY AVE TO BE OPEN TO TRAFFIC.



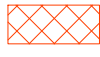


MARK	REVISION	DATE	BY

M:\DESIGN\Projects\15045\CAD\Traffic\15045TE-TrafficControl Phase 2.dwg  
 CONTRACT NO: **MADISON, WI**  
**LAKE ST & UNIVERSITY AVE - SANITARY SEWER REPLACEMENT**  
**TRAFFIC CONTROL PLAN - PHASE 2 PEAK HOUR - WEEKDAYS**

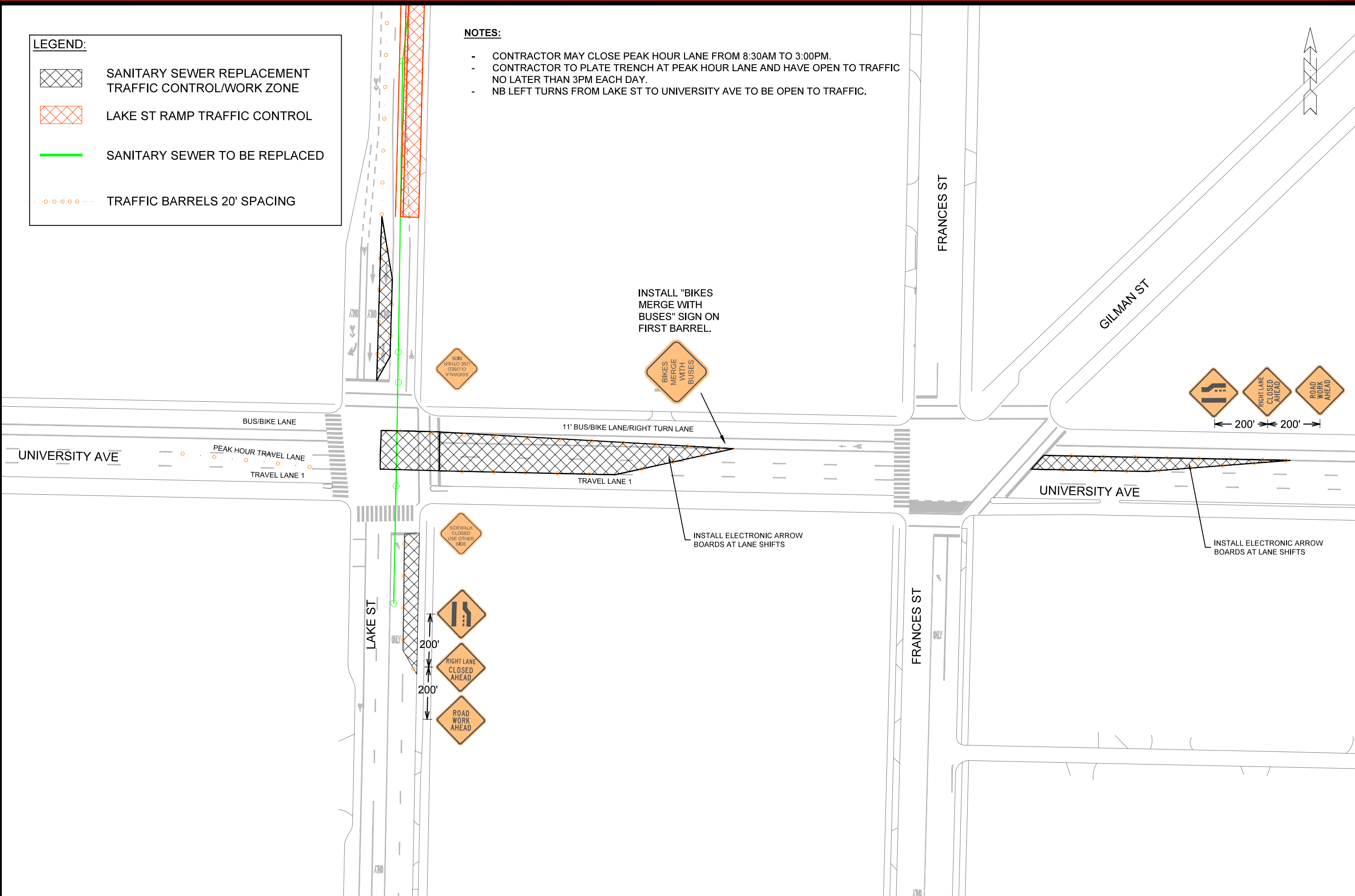


**15045**  
**TC - 3**

**LEGEND:**

-  SANITARY SEWER REPLACEMENT TRAFFIC CONTROL/WORK ZONE
-  LAKE ST RAMP TRAFFIC CONTROL
-  SANITARY SEWER TO BE REPLACED
-  TRAFFIC BARRELS 20' SPACING

- NOTES:**
- CONTRACTOR MAY CLOSE PEAK HOUR LANE FROM 8:30AM TO 3:00PM.
  - CONTRACTOR TO PLATE TRENCH AT PEAK HOUR LANE AND HAVE OPEN TO TRAFFIC NO LATER THAN 3PM EACH DAY.
  - NB LEFT TURNS FROM LAKE ST TO UNIVERSITY AVE TO BE OPEN TO TRAFFIC.



MARK	REVISION	DATE	BY

TRAFFIC CONTROL PLAN - PHASE 2 OFF PEAK - WEEKDAYS  
 LAKE ST & UNIVERSITY AVE - SANITARY SEWER REPLACEMENT  
 MADISON, WI  
 CONTRACT NO:




15045  
 TC - 4

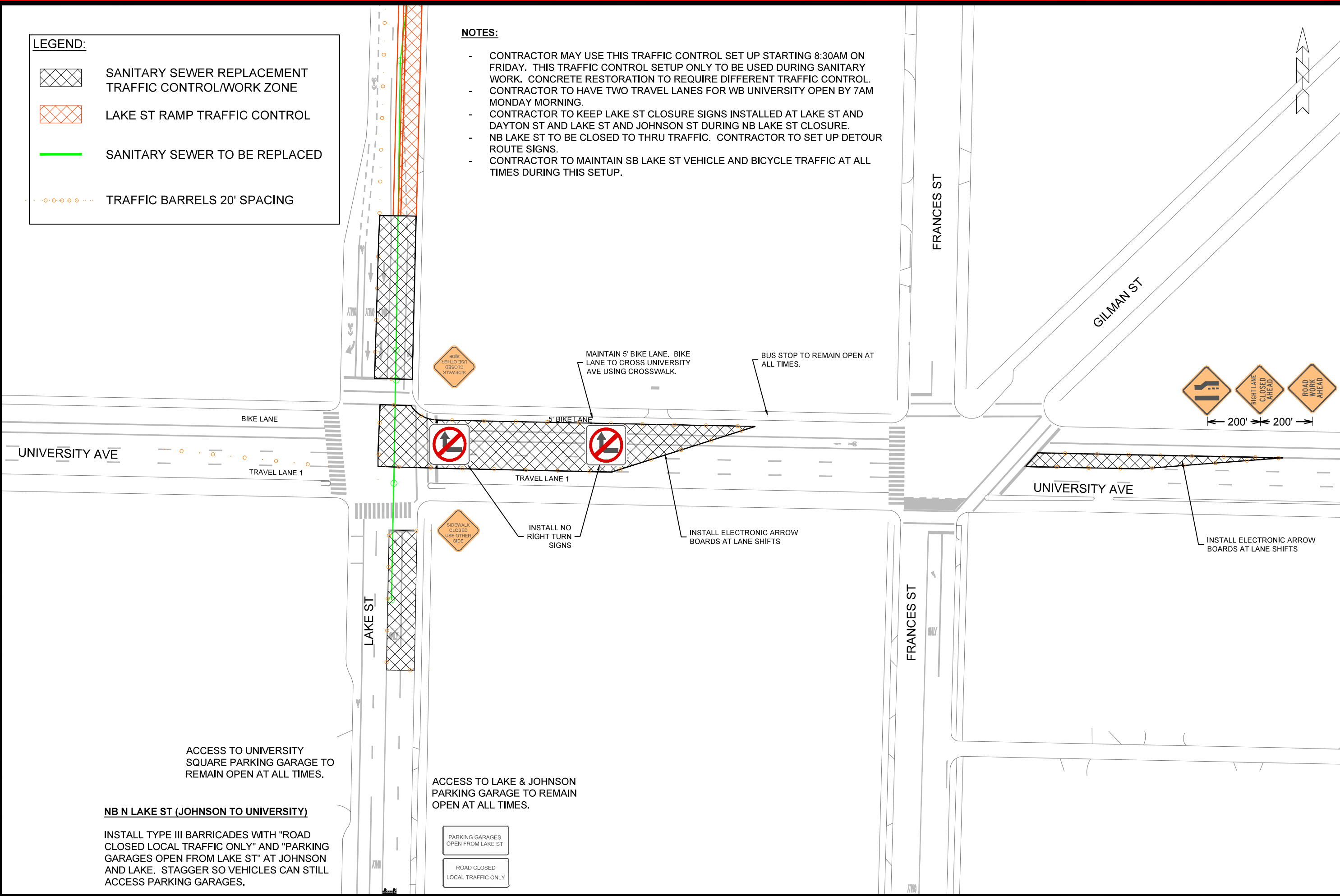
M:\DESIGN\Projects\15045\CAD\Traffic\15045TE-TrafficControl Phase 2 - Off Peak.dwg



**LEGEND:**

-  SANITARY SEWER REPLACEMENT TRAFFIC CONTROL/WORK ZONE
-  LAKE ST RAMP TRAFFIC CONTROL
-  SANITARY SEWER TO BE REPLACED
-  TRAFFIC BARRELS 20' SPACING

- NOTES:**
- CONTRACTOR MAY USE THIS TRAFFIC CONTROL SET UP STARTING 8:30AM ON FRIDAY. THIS TRAFFIC CONTROL SETUP ONLY TO BE USED DURING SANITARY WORK. CONCRETE RESTORATION TO REQUIRE DIFFERENT TRAFFIC CONTROL.
  - CONTRACTOR TO HAVE TWO TRAVEL LANES FOR WB UNIVERSITY OPEN BY 7AM MONDAY MORNING.
  - CONTRACTOR TO KEEP LAKE ST CLOSURE SIGNS INSTALLED AT LAKE ST AND DAYTON ST AND LAKE ST AND JOHNSON ST DURING NB LAKE ST CLOSURE.
  - NB LAKE ST TO BE CLOSED TO THRU TRAFFIC. CONTRACTOR TO SET UP DETOUR ROUTE SIGNS.
  - CONTRACTOR TO MAINTAIN SB LAKE ST VEHICLE AND BICYCLE TRAFFIC AT ALL TIMES DURING THIS SETUP.



**NB N LAKE ST (JOHNSON TO UNIVERSITY)**

INSTALL TYPE III BARRICADES WITH "ROAD CLOSED LOCAL TRAFFIC ONLY" AND "PARKING GARAGES OPEN FROM LAKE ST" AT JOHNSON AND LAKE. STAGGER SO VEHICLES CAN STILL ACCESS PARKING GARAGES.



MARK	REVISION	DATE	BY

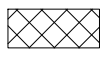
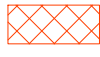

Designed By: \_\_\_\_\_ Date: 3/22/2024 11:40 AM  
Scale: \_\_\_\_\_

TRAFFIC CONTROL PLAN - PHASE 2 - WEEKEND  
 LAKE ST & UNIVERSITY AVE - SANITARY SEWER REPLACEMENT  
 MADISON, WI  
 CONTRACT NO: \_\_\_\_\_



15045  
 TC - 5

**LEGEND:**

-  SANITARY SEWER REPLACEMENT TRAFFIC CONTROL/WORK ZONE
-  LAKE ST RAMP TRAFFIC CONTROL
-  SANITARY SEWER TO BE REPLACED

REMOVE SB TRAFFIC ON LAKE ST STARTING AT LANGDON ST. MAINTAIN 5' SB BIKE LANE.

CITY TRAFFIC ENGINEERING TO COORDINATE TRAFFIC CONTROL FRONTING STATE ST GARAGE PROJECT WITH GARAGE CONTRACTOR.

INSTALL "BIKES MERGE WITH BUSES" SIGN ON BARREL.

INSTALL ELECTRONIC FLASHING ARROW BOARD AT LANE SHIFTS

INSTALL 4" YELLOW SKIPS (2' LINE WITH 6' GAP) TEMPORARY PAVEMENT MARKING TAPE

INSTALL 4" SKIPS (2' LINE WITH 6' GAP) TEMPORARY PAVEMENT MARKING TAPE

SHIFT NB LAKE ST TRAFFIC. NB LAKE ST WILL BE THRU AND LEFT TURN COMBINED LANE.

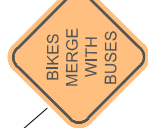
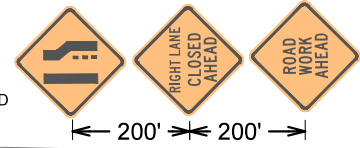
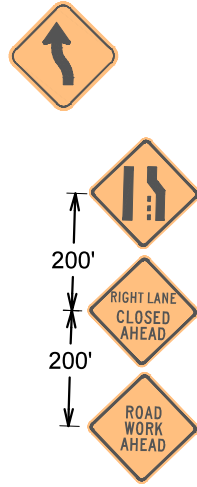
INSTALL ELECTRONIC FLASHING ARROW BOARD AT LANE SHIFTS

UNIVERSITY AVE

UNIVERSITY AVE

LAKE ST

FRANCES ST



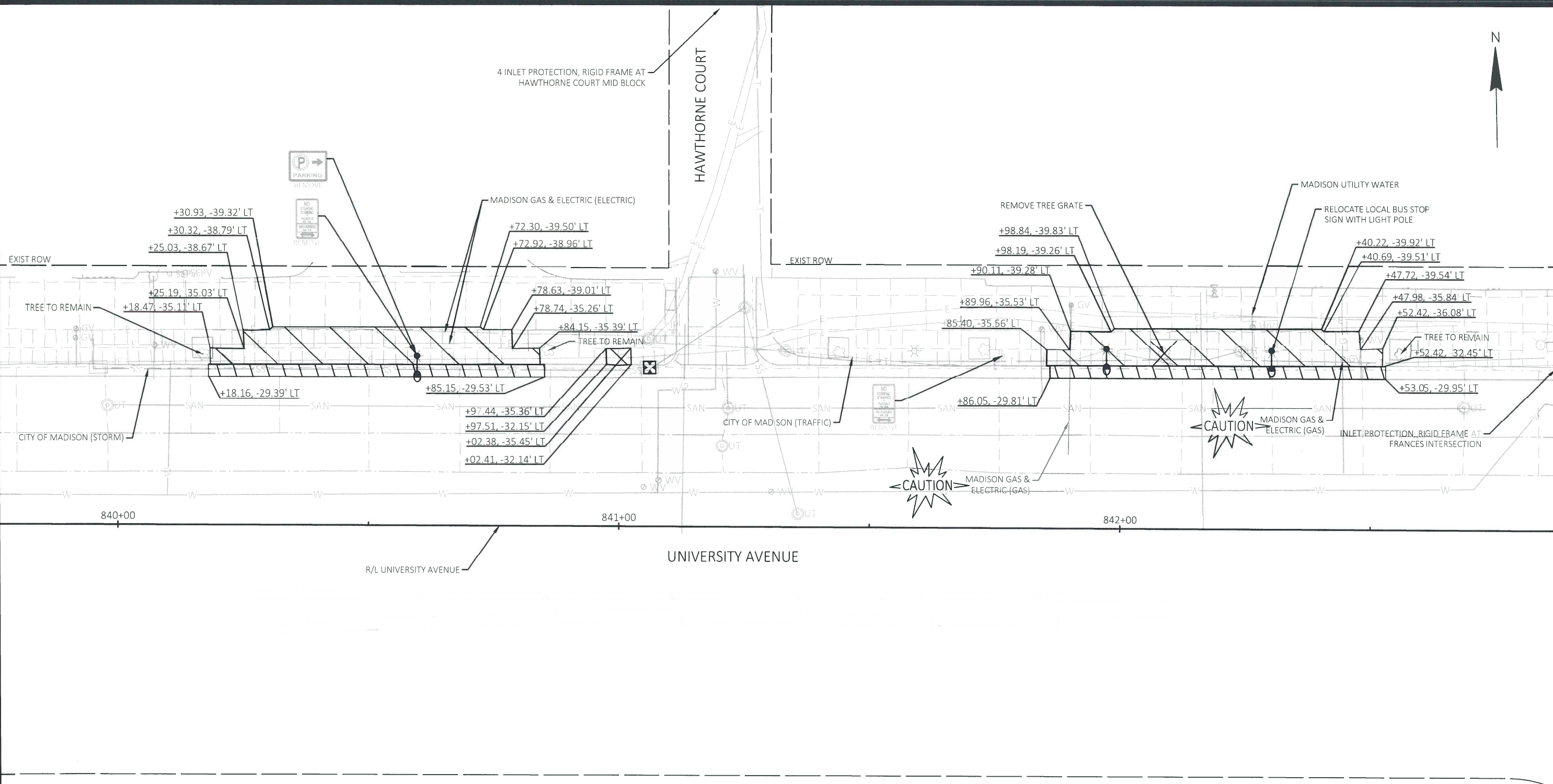
MARK	REVISION	DATE	BY

Designed By: \_\_\_\_\_ Date: 3/22/2024 11:49 AM  
 Scale: \_\_\_\_\_

TRAFFIC CONTROL PLAN - PHASE 3  
 LAKE ST & UNIVERSITY AVE - SANITARY SEWER REPLACEMENT  
 MADISON, WI  
 CONTRACT NO: \_\_\_\_\_  
 M:\DESIGN\Projects\15045\CAD\Traffic\15045TE-TrafficControl Phase 3.dwg



15045  
 TC - 6








REVISION	DATE	BY

Designed By: AECOM/Date: 2024-07-26  
Scale: 1" IN 20' FT  
9501

9501  
 REMOVAL PLAN: WB UNIVERSITY AVENUE AT HAWTHORNE COURT  
 LAKE STREET SANITARY SEWER REPLACEMENT - 2004 CITY OF MADISON, DANE COUNTY, WI  
 CONTRACT NO: 9501  
 CITY OF MADISON

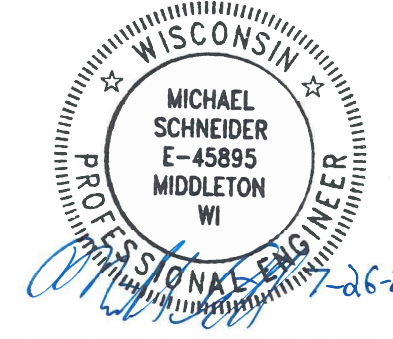
NOTE: TREE GRATES ARE THE PROPERTY OF THE CITY OF MADISON. THE CONTRACTOR SHALL CONTACT CITY FORESTRY AT (608) 266-4816 TO SCHEDULE DELIVERY OF SALVAGED TREE GRATES TO CITY FORESTRY FACILITY.

**REMOVALS LEGEND**

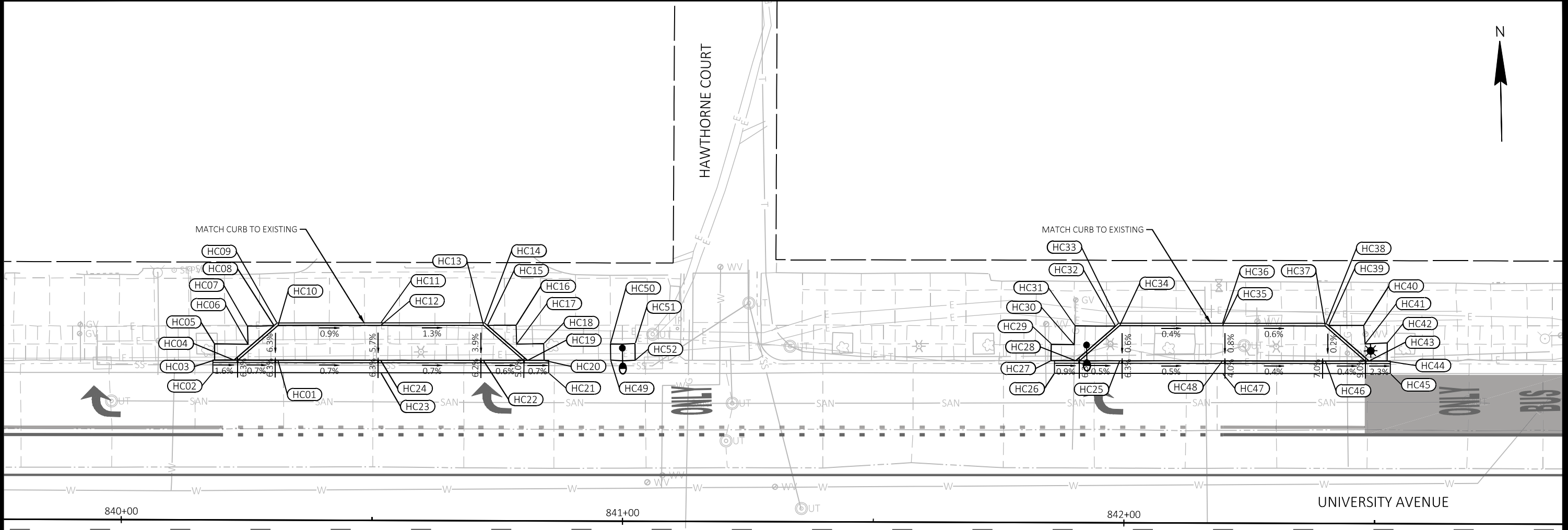
-  REMOVE CONCRETE CURB & GUTTER
-  REMOVE CONCRETE SIDEWALK & DRIVEWAY
-  REMOVING TREE (PAID AS CLEARING & GRUBBING)  
FOLLOW 107.13 FOR TREES TO REMAIN
-  INLET PROTECTION, RIGID FRAME - PROVIDE AND INSTALL
-  SEE LIGHTING PLAN

NOTE: FOLLOW CITY OF MADISON TRAFFIC CONTROL DETAILS AND COMPLY WITH THE MUTCD TRAFFIC CONTROL REQUIREMENTS.

UNIVERSITY AVENUE AND  
 HAWTHORNE COURT TRANSIT  
 ENHANCEMENTS  
 DESIGNED BY: MICHAEL SCHNEIDER



9501  
 R-1



University Avenue at Hawthorne Court							University Avenue at Hawthorne Court							University Avenue at Hawthorne Court						
POINT NUMBER	STATION	OFFSET	Y COORDS	X COORDS	ELEVATION	COMMENT	POINT NUMBER	STATION	OFFSET	Y COORDS	X COORDS	ELEVATION	COMMENT	POINT NUMBER	STATION	OFFSET	Y COORDS	X COORDS	ELEVATION	COMMENT
HC01	840+31.13	31.92' LT	482324.91	817750.77	864.58	BOC	HC19	840+80.90	32.02' LT	482323.82	817800.53	864.25	BOC	HC37	842+40.03	39.42' LT	482327.44	817959.79	863.44	FOC
HC02	840+18.17	29.39' LT	482322.69	817737.74	864.46	MATCH	HC20	840+84.26	32.03' LT	482323.75	817803.88	864.40	MATCH	HC38	842+40.22	39.92' LT	482327.94	817959.98	863.77	MATCH
HC03	840+18.52	31.89' LT	482325.18	817738.15	864.89	MATCH	HC21	840+85.15	29.53' LT	482321.23	817804.71	863.98	MATCH	HC39	842+40.69	39.51' LT	482327.52	817960.45	863.75	MATCH
HC04	840+22.39	31.90' LT	482325.10	817742.02	864.64	BOC	HC22	840+72.13	32.00' LT	482324.01	817791.76	864.30	BOC	HC40	842+47.72	39.54' LT	482327.38	817967.47	863.77	MATCH
HC05	840+18.47	35.11' LT	482328.39	817738.19	865.14	MATCH	HC23	840+51.65	29.46' LT	482321.96	817771.22	864.23	MATCH	HC41	842+47.98	35.84' LT	482323.67	817967.65	863.67	MATCH
HC06	840+25.19	35.03' LT	482328.16	817744.90	865.00	MATCH	HC24	840+51.63	31.96' LT	482324.46	817771.26	864.44	BOC	HC42	842+52.42	36.08' LT	482323.80	817972.09	863.64	MATCH
HC07	840+25.03	38.67' LT	482331.80	817744.82	865.31	MATCH	HC25	841+99.05	32.33' LT	482321.33	817918.64	863.60	BOC	HC43	842+48.80	32.44' LT	482320.25	817968.39	863.39	BOC
HC08	840+30.32	38.79' LT	482331.79	817750.12	865.34	MATCH	HC26	841+86.05	29.81' LT	482319.11	817905.59	863.45	MATCH	HC44	842+52.42	32.45' LT	482320.18	817972.00	863.52	MATCH
HC09	840+30.93	39.32' LT	482332.30	817750.74	865.35	MATCH	HC27	841+85.33	32.30' LT	482321.63	817904.93	863.74	MATCH	HC45	842+53.05	29.95' LT	482317.66	817972.57	863.21	MATCH
HC10	840+31.12	38.82' LT	482331.80	817750.92	865.02	FOC	HC28	841+90.29	32.31' LT	482321.52	817909.89	863.64	BOC	HC46	842+40.05	32.42' LT	482320.44	817959.63	863.42	BOC
HC11	840+51.62	39.41' LT	482331.91	817771.42	865.17	MATCH	HC29	841+85.46	35.60' LT	482324.92	817905.13	863.81	MATCH	HC47	842+19.58	29.88' LT	482318.39	817939.11	863.25	MATCH
HC12	840+51.62	38.91' LT	482331.41	817771.41	864.84	FOC	HC30	841+89.95	35.53' LT	482324.74	817909.63	863.77	MATCH	HC48	842+19.55	32.38' LT	482320.89	817939.14	863.50	BOC
HC13	840+72.12	39.00' LT	482331.01	817791.91	864.58	FOC	HC31	841+90.11	39.28' LT	482328.48	817909.87	863.93	MATCH	HC49	840+97.51	32.15' LT	482323.56	817817.13	864.25	MATCH
HC14	840+72.30	39.50' LT	482331.51	817792.11	864.91	MATCH	HC32	841+98.19	39.26' LT	482328.27	817917.95	863.96	MATCH	HC50	840+97.44	35.36' LT	482326.77	817817.14	864.37	MATCH
HC15	840+72.92	38.96' LT	482330.96	817792.71	864.89	MATCH	HC33	841+98.84	39.83' LT	482328.83	817918.62	863.98	MATCH	HC51	841+02.38	35.45' LT	482326.75	817822.08	864.32	MATCH
HC16	840+78.63	39.01' LT	482330.87	817798.41	864.80	MATCH	HC34	841+99.03	39.33' LT	482328.33	817918.80	863.66	FOC	HC52	841+02.41	32.14' LT	482323.43	817822.03	864.26	MATCH
HC17	840+78.74	35.26' LT	482327.12	817798.44	864.63	MATCH	HC35	842+19.53	39.38' LT	482327.89	817939.29	863.56	FOC							
HC18	840+84.14	35.39' LT	482327.11	817803.84	864.61	MATCH	HC36	842+19.53	39.88' LT	482328.39	817939.30	863.89	MATCH							

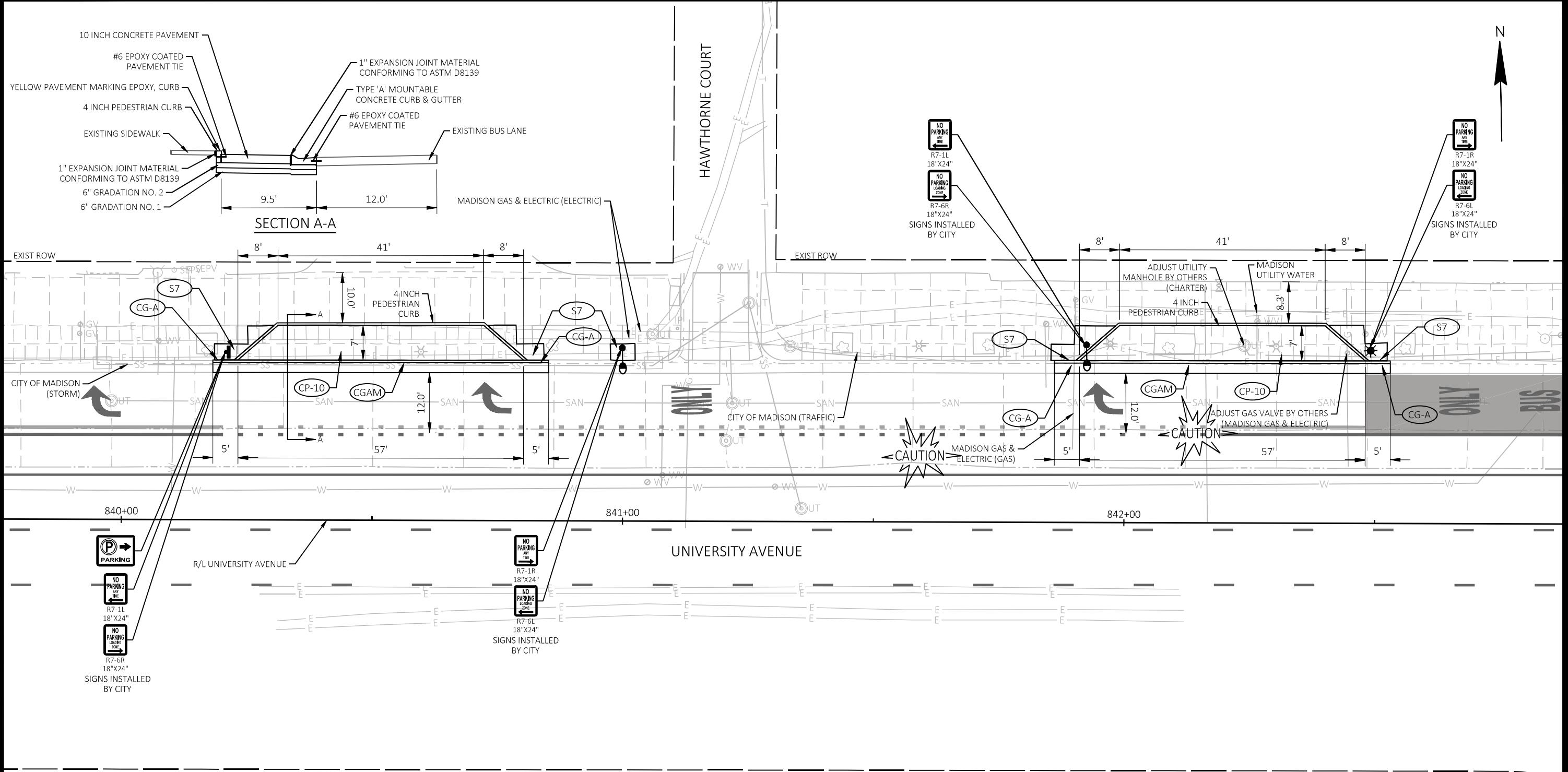
ACRONYMS  
 BOC BACK OF CURB  
 FOC FACE OF CURB  
 MATCH MATCH EXISTING

REVISION  
 MARK  
 DATE  
 BY  
 Scale: 1 IN=20 FT  
 9501

9501  
 SITE PLAN: WB UNIVERSITY AVENUE AT HAWTHORNE COURT  
 LAKE STREET SANITARY SEWER REPLACEMENT - 2004 CITY OF MADISON, DANE COUNTY, WI  
 CITY OF MADISON  
 CONTRACT NO: 9501

9501  
**G-1**

FILE NAME: C:\P\WORKING\AECOM\_DS20\_NA\_2019\MEGHAN.MCCARTHY@AECOM.COM\DM586351050314C-GD.DWG  
 LAYOUT NAME - Plan 1 IN 20 FT  
 LAST PLOT DATE: 2024-07-26



MARK	REVISION	DATE	BY
9501	Designed By: AECOM	2024-07-26	9501

9501

SITE PLAN: WB UNIVERSITY AVENUE AT HAWTHORNE COURT

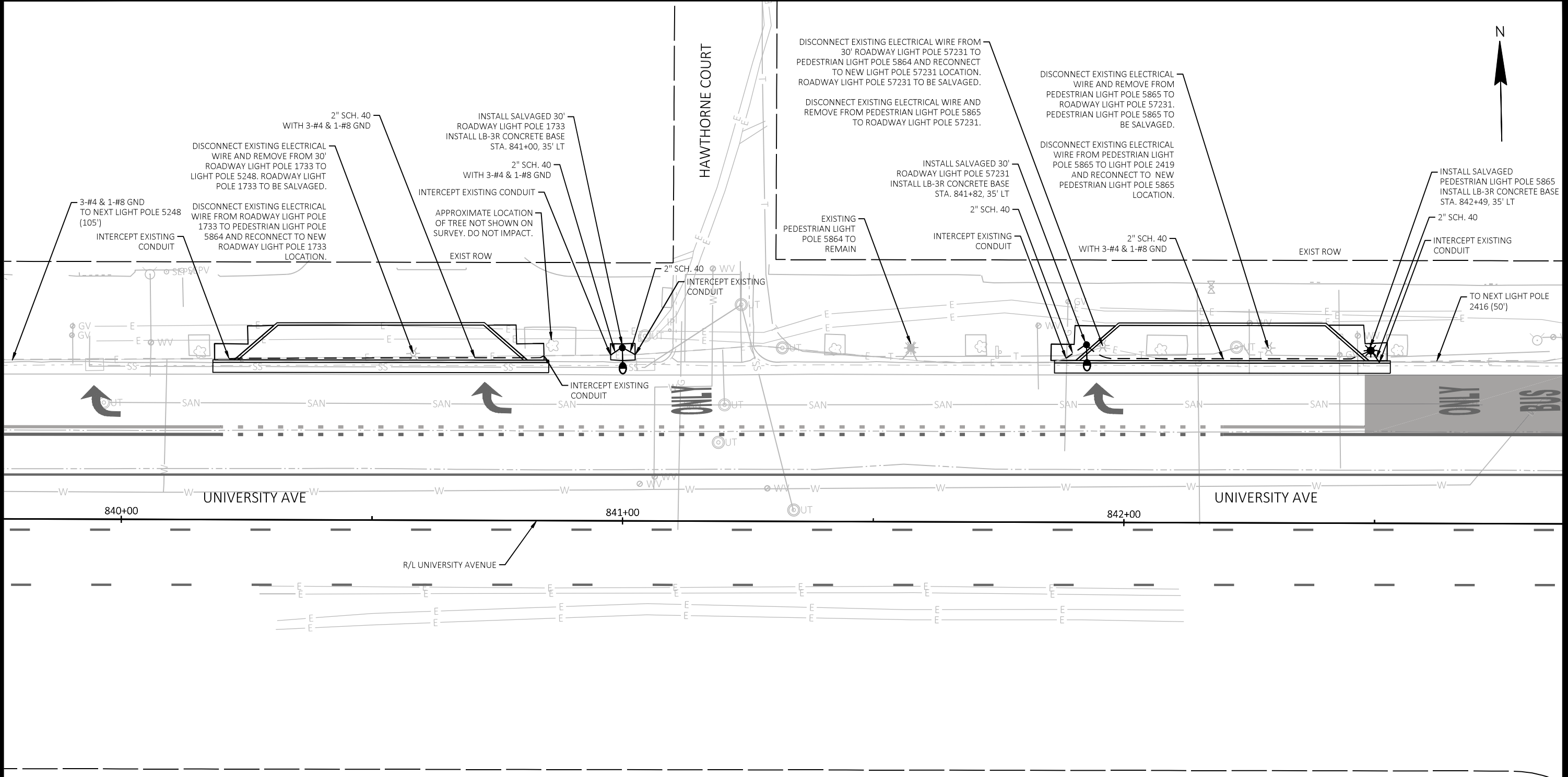
LAKE STREET SANITARY SEWER REPLACEMENT - 2004 CITY OF MADISON, DANE COUNTY, WI

**CITY OF MADISON**

CONTRACT NO: 9501

**SITE PLAN LEGEND**

	10 INCH CONCRETE PAVEMENT
	7 INCH CONCRETE SIDEWALK & DRIVE
	TYPE "A" MOUNTABLE CONCRETE CURB & GUTTER (PAY AS TYPE "A" CONCRETE CURB & GUTTER)
	TYPE "A" CONCRETE CURB & GUTTER
	SEE LIGHTING PLAN






REVISION	DATE	BY

MARK  
Designed By: AECOM/Date: 2024-07-26  
9501

9501  
 LIGHTING PLAN: WB UNIVERSITY AVENUE AT HAWTHORNE COURT  
 LAKE STREET SANITARY SEWER REPLACEMENT - 2004 CITY OF MADISON, DANE COUNTY, WI  
 CITY OF MADISON  
 CONTRACT NO: 9501

- CONSTRUCTION NOTES:
1. LIGHTING SYSTEM TO REMAIN OPERATIONAL DURING CONSTRUCTION. NO TEMPORARY SYSTEM WILL BE INSTALLED AT THIS LOCATION.
  2. PLANS WERE DEVELOPED BASED ON INFORMATION AVAILABLE AT THE TIME OF DESIGN. CONTRACTOR TO FIELD REVIEW LIGHTING INFRASTRUCTURE LOCATIONS AND WIRE/CABLE ROUTING AND ADJUST AS NECESSARY. COORDINATE ALL FIELD ADJUSTMENTS WITH THE ENGINEER.

**LIGHTING PLAN LEGEND**

-  30' ROADWAY LIGHT POLE
-  PEDESTRIAN LIGHT POLE
-  2" PVC CONDUIT (SCHEDULE NOTED ON PLANS)



9501  
 L-1